



LAKSHYA
INTERNATIONAL SCHOOL



Dream, Explore, Discover and...

STAND OUT

www.lakshyaschool.in

[principal]



Dear all,
Greetings and Welcome to Lakshya International School !!
"If student don't learn the way we teach them, lets teach them the way they learn" - Kenneth Dunn.

As the founder principal, I do welcome the opportunity to introduce you to Lakshya International School. One of the most important decisions that any family makes is the school they choose for their child's education. "Our mission is to provide positive catalytic impulses to every CHILD to stretch his inherent learning competencies through a self discovery process."

At Lakshya International School, the uniqueness of each child will be recognized, nurtured and treasured. Education is a complete process that leads to the attainment of the full potential of the child. Our endeavor is to equip our students with life-skills to face the real world - be it planning, organizing, deciding, questioning, reasoning, analyzing, team-building, communicating effectively or dealing with challenges confidently.

Our focus is to develop our students as global citizens, with tolerance, respect and appreciation of diverse cultures and religions for a life-time learning experience. They should be self-motivated, independent, confident decision makers to take up leadership roles in future.

At Lakshya, we arm our students with technological supremacy and help them integrate it with values, morals and our cultural legacy. The school curriculum has been painstakingly planned on scientific guidelines to provide students with intellectual stimulation, physical robustness, social adaptability, emotional independence and leadership qualities. It is our endeavor to establish a quality conscious school where Excellence is driven by values, Success is strengthened by ethics and Modernity is fortified by tradition.

We at lakshya truly believe that each child entrusted to us will receive education in its finest form. We are aware that learning is a lifelong process and, therefore, students are motivated to challenge their hidden potential.

Mr. Satyaki Banerjee
Head of School
Lakshya International School.

[secretary]

Completing my study in Good shepherd school of ooty which is considered as the best in the country, I have established my identity with Software field with a virgin beginning as a humble employee and I was elevated as a team leader. With an intention to share my experiences and to propel the students of Aditya to reach high destinations, I have taken up the assignment in Aditya as secretary of the group.

In the back - drop of globalization, the barriers of the countries as well as continents are wiped out. Undoubtedly the spectrum of employment opportunities is widened with the advent of entry of multi National companies in to the industrial hemisphere. The expectations on the competency of the manpower has reached alarming proportion and it is a need of the hour to meet their demand for getting choicest placements.

An expertise in soft skills i.e., communication skills, group discussions, positive thinking, goal achievement, time management is playing a significant role in campus selection and at the same time deep penetration to grass root level of the core subjects is a paramount need. Unless efficiency in both the wings is mastered a student cannot reach the destination as per his aspiration.

Software industry expects the employee to update his knowledge on a regular basis, reading the pulse of the radical changes in this technical arena and if it is ignored continuance of an employment secured will be posing a threat as Damocle's sword will be hanging on the neck at every moment. Caution should be exercised by the recruitee aspirants as they should constantly and consistently revolve in the groov of growth.

With the practical experience gained my aim is to supplement all the necessary inputs to the students both in theory and practice as per the expectations of the software industry.

Wishing you to flourish in flying colours.

Mr. Deepak Reddy

Secretary

Lakshya International School.



CONTENT

| | |
|----|---------------------------------------|
| 05 | VISION MISSION STATEMENT |
| 09 | WHAT MAKES LIS TRULY DISTINCTIVE ? |
| 12 | OUR EDUCATIONAL PHILOSOPHY |
| 12 | THE LEARNING PROGRAMME AT LIS |
| 13 | KINDERGARTEN AND PRIMARY PROGRAMME |
| 24 | MIDDLE SCHOOL (SECONDARY) PROGRAMME |
| 25 | SPORTS EDUCATION PROGRAMME |
| 28 | COMMUNICATION BETWEEN HOME AND SCHOOL |
| 29 | SCHOOL INFRASTRUCTURE HIGHLIGHTS |
| 30 | DANCE STUDIO |
| 31 | ART STUDIO |
| 33 | CLUBS |
| 35 | LABS |
| 36 | INFIRMARY |
| 40 | SCHOOL LIBRARY |
| 40 | INNOVATIVE PROGRAMMES @ LIS |
| 41 | CAFETERIA |
| 41 | TRANSPORT SYSTEM |
| 48 | VISION OF EXCELLENCE |

VISION MISSION STATEMENT

VISION OF LIS

LIS aims to be a leading institution in international education in South East Asia. We will provide avenues for academic and holistic development and create globally responsible citizens who confront challenges without the fear of failure. Lakshya aspire to carve a community that thrives on teamwork and individual excellence.

MISSION STATEMENT OF LIS

Lakshya International School is a culturally rich mosaic which aims to prepare students who would appreciate learning as a life long process. We build in the capacity in all lakshyans to be knowledgeable, innovative, compassionate and empathetic with intercultural understanding. Our students will also cultivate entrepreneurial & social skills alongwith valuing honesty, integrity, loyalty and prudence.



CORE VALUES

| | |
|------------------------|-------------------------------------|
| L EADERSHIP | is action and example. |
| A CCOUNTABILITY | for one's own action and inactions. |
| K NOWLEDGEABLE | with wit and humour. |
| S INCERITY | as the key to success. |
| H ONESTY | in thought and action. |
| Y OUTHFUL | in heart and deeds. |
| A MBITIOUS | to achieve the goals |





HOLISTIC DEVELOPMENT

A holistic approach to teaching and learning is important for the physical, emotional, intellectual creative, spiritual and social well-being of children, and to develop them as well-rounded individuals. At LIS, we lay emphasis on experiential and exploratory methods of learning, well beyond the classroom, as well as espouse the appreciation and practice of our school's values and attributes. We constantly ensure that holistic approaches to teaching and learning are achieved in multiple ways - ongoing review of curricula, introduction of new subjects, the breadth of sports and co-curricular activities, and the regular upgrading of infrastructural facilities and resources. In the classroom, students present their work by way of presentations, role plays, small skits and impromptu debates. The students have many out-of-classroom activities and experiences such as theatre, photography, film appreciation, music, robotics, football, cricket, tennis, basketball, taekwondo, and many more. Community service encourages children to understand the challenges faced by the less-privileged and sensitises them to the importance of being compassionate. The School has recently become an EduJapan Cell School which will truly support the cause of being an International School. The EduJapan Programme is about knowing about Japanese Culture & its Learning Ecosystem paving the path for high value employment & entrepreneurial opportunities with the host of Japanese Companies. Furthermore the school is also working towards the accreditation of International School Award (ISA) introduced by the British Council where ISA recognizes and celebrates exemplary practices of internationalism in schools.

PEDAGOGY

"The pedagogy is competent and contemporary. It serves as the best preparation for further studies in the finest universities of the world. Activity based, experiential learning is facilitated across all classes. Every student participates and contributes to the interactive and collaborative classrooms where they are encouraged to think laterally and link the topics from their taught curriculum. The school has extremely well qualified and committed academic staffs, whose members have exposure to international educational systems and are trained in Inquiry based learning and teaching methods which makes thinking visible in the classrooms.

CLASSROOM CULTURE AT LAKSHYA

"The pedagogy is competent and contemporary. It serves as the best preparation for further studies in the finest universities of the world. Activity based, experiential learning is facilitated across all classes. Every student participates and contributes to the interactive and collaborative classrooms where they are encouraged to think laterally and link the topics from their taught curriculum. The school has extremely well qualified and committed academic staffs, whose members have exposure to international educational systems and are trained in Inquiry based learning and teaching methods which makes thinking visible in the classrooms.



WHAT MAKES LIS TRULY DISTINCTIVE ?

1. Celebrates a culture of excellence in academics and the all-round development of children
2. Offers International Baccalaureate Primary Years Programme (IBPYP) - LKG to V and CBSE VI to X with teaching methodologies which meets global standards.
3. Talented, experienced and dedicated teachers with linguistic and cultural diversity.
4. National and International Exchange Programmes for students.
5. Lakshya is a EduJapan Cell school.
6. Centralized AC campus with 1:20 teacher-student ratio.
7. Innovative Programmes for all classes Life skills, Value Education, DEAR (Drop Everything and Read), Student Wellness Programme.
8. Smart Classes and E-learning.
9. Integrated Project Based Learning (PBL).
10. A well laid Sports Education Programme (SEP).
11. Emphasis on fine arts, performing arts, a strong Culture of Drama, Debate and Literary activities.
12. Upholds Indian culture and values, whilst fostering global citizenship.
13. High-quality student leadership opportunities including exposure to leaders, innovators and iconic personalities from all walks of life.
14. A safe and secure learning environment, with focus on student well-being.

SALIENT FEATURES

A safe, secure and conducive environment where each child will be able to enjoy learning, dare to dream, achieve excellence and become a lifelong learner.

A high quality and comprehensive instructional program that support children's academic, moral, social and physical development.

Lakshya inculcates in children the values of empathy, compassion and respect towards others and the environment.

To make children aware and appreciative of their history, culture and traditions, whilst being open to other cultures and alternative views of the world.

The school fosters global-mindedness through interactions and exchange

programmes with organisations, institutions and universities around the world.

Lakshya also help children develop into confident communicators in more than one language, and as learners who are principled, reflective and self-directed. We encourage children to develop the qualities of self-discipline, positive self-image, resourcefulness, teamwork, spirit of adventure and leadership.

To build a community of outstanding and caring educators, with rich experience and multi-cultural perspectives and provide them with ongoing professional development.

Lakshya's infrastructure highlights includes a HOME STUDIO for life skills development of students and an EXPLORATION ROOM for the Kindergarten and Primary students.





[OUR EDUCATIONAL PHILOSOPHY]



THE LEARNING PROGRAMME AT LIS

- 1) Learn to observe probe and question, use senses, collect data and organize.
- 2) Interpret observation meaningfully and develop a consistent view of new situations.
- 3) Integrate interpretations with previous knowledge
- 4) Be open to other explanations
- 5) Reflect on their experiences and find their personal responses to situations.
- 6) Discover how they can do their best in a given situation without the need for reward and punishment.
- 7) Learn to listen carefully.
- 8) Recognize that different points of view can all be correct and deserve respect.
- 9) Work together in small and large groups and tasks which require cooperative behavior.
- 10) Develop a continuous comprehensive evaluation in the form of constructive report.

EXPERIENTIAL LEARNING

Lakshya disapproves the perception that experiential learning can only take place in a small scale. Every child has a unique excelling talent. We use various teaching strategies to bring out the hidden capabilities and motivate them to develop in those particular areas. At LIS,

we follow IBPYP (International Baccalaureate Curriculum) that specify on Inquiry Based learning, students are trained to integrate and learn; learn and apply and apply and act. Students are engaged in various activities both in classroom and beyond giving them liberty to think out of the box. Lakshya always believes in development and progress but grades and marks. Assessments are designed in a way that offer students with meaningful hand-on-experiences that empower students to tackle new challenges. Through these strategies and assessments students gain awareness of other cultures; develop leadership and teamwork skills; learn to encourage and respect others thoughts and ideas.



INTERNATIONAL KINDERGARTEN PROGRAMME

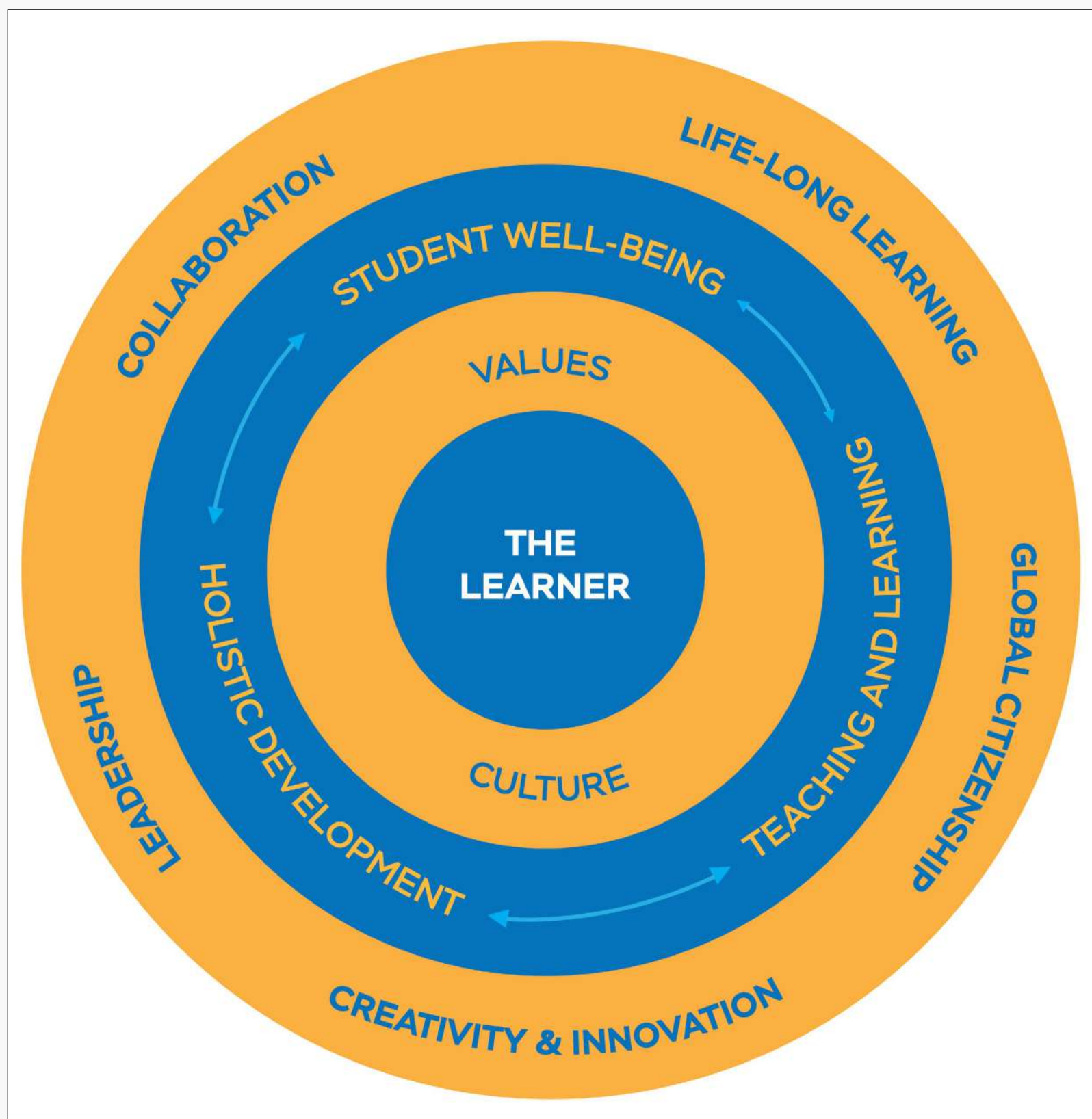
Lakshya School is a IBPYP (candidate) School. This school is pursuing authorization as an IB World School. IB World Schools share a common philosophy a commitment to high-quality, challenging, International education that we believe is important for our student.

Pre Primary education is an important stage which lays the foundation for lifelong learning and wholesome development and serves as the starting point of formal education. It articulates with Primary, secondary and tertiary education to form an entire spectrum of education.

According to the theory of Multiple Intelligences there are many aspects of human intelligence and every individual has varied strengths. We at Lakshya provide a diversified learning environment for children to develop their potentials.



LAKSHYA CURRICULUM MODEL







THE CURRICULAM GOALS

- a. To Nurture children to attain all-round development in the domains of ethics, intellect, physique, social skills and aesthetics, and to develop good habits, so as to prepare them for life.
- b. To stimulate children's interest in learning and cultivate in them positive learning attitudes, in order to lay the foundation for their future learning.
- c. To prepare them as better inquirers, reflective, caring, knowledgeable, open minded, risk-takers and thinkers.



The IBPYP curriculum at Lakshya addresses students' academic, social and emotional well-being. It encourages students to develop independence and to take responsibility for their own learning.



ACTIVITIES WILL ENGAGE ALL THE KINDERGARTEN CHILDREN IN MEANINGFUL EXPERIENCES WHICH WILL BE THE FOUNDATION FOR:

- a. Reading and writing
- b. Solving problems
- c. Manipulating materials
- d. Speaking and listening
- e. Viewing and thinking
- f. Forming concepts and ideas about numbers



Your child's programme will include six areas for children's learning over the two year program.

THESE AREAS ARE:

- 1. Personal and social development
- 2. Language
- 3. Mathematics
- 4. Science and Technology
- 5. Health and Physical Activity
- 6. Arts



PRIMARY CURRICULUM

An overview

To provide maximum opportunities for all learners to become lifelong learners.

To offer a broad, balanced, relevant and rigorous curriculum to all learners.

To give learners the knowledge and understanding

To equip them for their further academic careers and their lives in the 21st Century.

To ensure equal opportunity to all learners regardless of their gender, ethnicity, religion or background.

To promote learners' spiritual, moral, social and cultural development.





Thinking routines form the core of the Visible Thinking program at Lakshya. What makes these routines work to promote the development of a students thinking and the classroom culture are that each routine:

- Is goal oriented in that it targets specific types of thinking
- Gets used over and over again in the classroom
- Consists of only a few steps
- Is easy to learn and teach
- Is easy to support when students are engaged in the routine
- Can be used across a variety of context
- Can be used by the group or by the individual



IB MISSION STATEMENT:

The International Baccalaureate aims to develop inquiring, knowledgeable and caring young people who help to create a better and more peaceful world through intercultural understanding and respect.

To this end the organization works with schools, governments and international organizations to develop challenging programmes of international education and rigorous assessment.

These programmes encourage students across the world to become active, compassionate and lifelong learners who understand that other people, with their differences, can also be right.



WHAT IS IB?

The IB offers a n education for students from age 3 to 19, comprising of four programmes that focus on teaching students to think critically and independently, and how to inquire with care and logic. The IB prepares students to succeed in a world where facts and fiction merge in the news, and where asking the right questions is a crucial skill that will allow them to flourish long after they've left our programmes. IB teachers and coordinators, who develop and promote the IB's curriculums in almost 5,000 schools globally every day, in over 150 countries around the world, support us.

WHAT IS PYP?

The International Baccalaureate (IB) Primary Years Program is a curriculum framework designed for students aged 3 to 12.

The PYP trans-disciplinary framework focuses on the development of the whole child as an inquirer, both at school and beyond.

Informed by research into how students learn, how educators teach, and the principles and practice of effective assessment, the program places a powerful emphasis on inquiry-based learning.

Through its inquiry-led, trans disciplinary framework, the PYP challenges students to think for themselves and take responsibility for their learning as they explore local and global issues and opportunities in real-life contexts.

The PYP is a transformative experience for students, teachers and whole school communities. PYP students learn how to take control of their learning, teachers collaborate to deepen student- learning and increase their confidence and self-motivation. The whole school community, including parents, is viewed as partners in learning, and actively contributes to a holistic educational experience.

ASSESSMENTS IN PYP:

The purposes of assessment are to:

- Promote student learning
- Provide information about student learning
- Contribute to the successful implementation of the program.

Through assessment, the IB helps schools teaching the Primary Years Program (PYP) to identify what students know, understand, can do and value at different stages in the teaching and learning process.

In the PYP, learning is viewed as a continuous journey, where teachers identify students needs and use assessment data to plan the next stage of their learning.

Teachers use a wide range of assessment strategies to collect information on each of the elements represented in the written curriculum: the understanding of concepts, the acquisition of knowledge, the mastering of skills, the development of positive attitudes and the ability to take responsible action.





SECONDARY SCHOOL CURRICULUM MISSION AND GOALS

THE CURRICULUM WILL ADOPT THE FOLLOWING PRINCIPLES

- To create a connect between learners' spiritual, ethical, social, cognitive, mental and physical growth and development
- To nurture individuality and thus enhance one's innate potential
- To foster constitutional literacy and tolerance for different cultures
- To develop scientific outlook and transformative competences
- In order to meet the demands of a changing society



SPORTS PROGRAM (SPORTS EDUCATION PROGRAMME)

Both outdoor physical activity and indoor classroom time are important for kids growth and development. LIS provides students with the education they need to have a successful career, and physical activity gives them a chance to stay healthy. LIS emphasizes on the development of Knowledge, attitudes and skills related to range of physical and health related activities. In fact, the Centers for Disease Control and Prevention recommend that children get 60 minutes of physical activity a day.

Through school sports education program students will

- a. Learn about body control and spatial Awareness
- b. Master new skills and techniques in a variety of physical activities
- c. Manipulate sports equipment or apparatus

- d. Recognize the importance of fair play
- e. Understand how strategies can assist when participating in physical activities
- f. Use co-operative behaviors in order to function as part of a group or team
- g. Use proper safety precautions when engaging in physical activities.

LIS offers age-specific full development physical education program. We believe that a healthy mindset resides in a healthy body. The emphasis on the program is to keep the students active as possible, to help improve fitness and to learn sports and activities which they can use throughout their lives. Active participation in sports instills a number of positive character traits that will stand students in good stead for a lifetime. Anger Management, Concentration, Healthy Lifestyle, Motor Skills, Responsibility, Social Bonding, Teamwork, Commitment, Good Sportsmanship, Resilience, Competitive

spirit are a few that helps a student be an all-rounder.

Lakshya provides adequate fitness opportunities for students alongwith safe and challenging playground equipments. We provide Lakshyans with various sports facilities where they discover their strengths and weakness and can develop their skills with the help of well trained coaches.

Our campus is facilitated with various sports and fitness activity centers for children to learn and emerge themselves in their sports corners. We encourage students to participate in all types of sports activities. Every Lakshyan is trained in long jump, Javelin Throw, shot put, swimming, cricket, football, basketball, athletics, yoga, lezumes, chess, snookers, and caroms.



Both outdoor physical activity and indoor classroom time are important for kids growth and development. School provides students with the education they need to have a successful career, and physical activity gives them a chance to stay healthy. In fact, the Centers for Disease Control and Prevention recommend that children get 60 minutes of physical activity a day.¹ Outdoor physical activity is even better for kids, as playgrounds and nature offer a host of opportunities to develop important skills. Unfortunately, not all kids get their daily 60 minutes outside at home because their parents work, in many cases. School is a place where kids can supplement the lack of physical activity they get at home, and recess also helps children perform better in school. Outdoor physical activity provided during school hours helps kids become smarter, healthier and stronger.

THE MANY HEALTH BENEFITS OF OUTDOOR PLAY

Outdoor play, as it occurs on playground equipment, offers a variety of developmental benefits to kids.² For example, playgrounds help children hone cognitive skills by way of sensory features (or equipment that stimulates children's auditory, tactile or visual senses). When students interact with

the equipment using their senses, they have the opportunity to solve problems and think critically. For instance, a ball maze panel offers kids the opportunity to move a small object through a labyrinth, which requires and exercises problemsolving abilities if the children meet a dead end in the maze, they have to backtrack and rethink their strategy. Playgrounds are also great environments for kids to learn important social skills. Imaginative play features such as climbers deliver opportunities for students to interact with one another.

Kids can race around the equipment, playing games of make believe with others, allowing students to learn team-building and cooperation skills. Furthermore, according to National Public Radio (NPR), imaginative play helps kids develop an emotional skill called executive function, which is the ability to self-regulate and monitor impulses. Perhaps the most obvious benefit of playgrounds is the development of physical skills. According to a study performed by Delano, Minn.-based Landscape Structures Inc., the type of equipment kids use will determine the physiological benefits they get while playing. The study monitored 10 children between ages 6 and 10 as they spent 20 minutes on the playground. The group was divided evenly into boys and girls, and all of the children played on two types of playstructures. One type of equipment (A) included predictable challenges such as platforms, slides and rock

walls. The other type (B) had small platforms at numerous heights and kids climbed on ropes to get to various levels instead of using stairs.

The research showed that children experienced cardiovascular health benefits as a result of the activity they did on playground A. However, the diverse and changing nature of playground B offered kids opportunities to increase strength, agility, balance, motor skills and even the ability to strategize.

GROWING UP HEALTHY

Kids need physical activity to be healthy, strong and smart, and they can stay active if school provide time for outdoor play. For starters, all children should spend time outside and get 60 minutes of physical activity every single day, two things that can occur simultaneously. Unfortunately, many kids aren't physically active and lose out on the benefits of outdoor play.

Schools can help change that fact by offering recess or outdoor classroom time where kids can play and learn on age- and developmentally appropriate playgrounds. Kids will grow healthy, strong and smart using school play equipment provided by Delano, Minn.-based Landscape Structures Inc.



THE RELEVANCE OF SPORTS EDUCATION @ LAKSHYA

The basis of sports education or physical education starts in school and thus SEP (Sports education Programme) is a curriculum and instruction model designed specially to impart physical education programmes at the Pre-Primary, Primary, middle and high school level. It aims to provide children and youth with authentic and enjoyable sports experience. Sports education always complements academic learning as it develops the overall personality of the students greatly. A good sportsman is the one who learns to obey the rules of the game. We strongly believe that education is not just academics, but extends to a holistic development of a child, and sports plays a vital role in it.





COMMUNICATION BETWEEN HOME AND SCHOOL

EACH CLASS HAS A SYSTEM OF REGULAR COMMUNICATION WITH HOME.

It's extremely important that the communication between the teacher and home is crucial for a child's development. Parents would get to know about their child's development and growth through formal and informal ways.

Parents are always encouraged to send notes, make phone calls, have a chat outside of the school at the end of the day when you wish to share information or ask questions. It is important to share any concern or ask questions so your child's school experiences

remain positive. If a major issue or concern arises, A CONFERENCE MAY BE ARRANGED.

- Student Handbook
- Newsletters
- Calendars
- Monthly Academic Planners
- Weekly Updates
- Agendas and Circulars
- Phone Calls and
- Notes

You will also receive formal reports of your child's progress throughout the year.



SCHOOL INFRASTRUCTURE HIGHLIGHTS



HOME STUDIO

The school boasts of the planned Home Studio which has a lot to offer to the students with regard to basic life skill education.

Our Life Skills program focuses on developing practical attributes that will guide our students through various aspects of life and reflect in the ease of their outward demeanor. Appealing confidence, a streak of independence in day to day activities, very positive approach towards life along with impeccable etiquette are some of the many skills we empower our students with.

SOME TOPICS THE LIFE SKILLS CURRICULUM COVERS

- Health and Hygiene
- Responsibility
- Dining etiquette
- Home keeping
- Soft skills

DANCE STUDIO



At LIS, we believe that dance is a form of expression. Dance encourages students to learn new styles and techniques, as well as helps them to increase their stamina, flexibility, balance and mental- wellness. It also teaches students to develop life-skills such as teamwork, problem solving, communication and sharing. Dance makes children imaginative and confident in reflecting skills in their lives.

ART STUDIO

Conceived to explore and optimize the creativity in every child, the LIS Arts Program for primary and secondary School enhances students impressions of the world they live in through the language of arts in a comprehensive, engaging way. In this process, they continuously sharpen and their powers of observation, imagination, and out-of-the-box thinking. Students at LIS are creative problem-solvers, expressing important ideas that can instigate positive change. Art is a process of trial and error, exploration and investigation into a wide range of cultures, history, media and techniques. It is hard work, yet very rewarding.

For IB: Its IB counterpart goes far beyond, encouraging students to challenge their own creative and cultural expectations and boundaries. There is a strong focus on the development of analytical skills in problem solving, and experimentation with a wide range of contemporary practices and media. For CBSE: In order to make works of art, students need to acquire a range of skills and certain knowledge. It is essential for students to be engaged in meaningful, open-ended, art-making activities that enable them to express personal feelings, experiences and ideas, as well as develop the skills to use art tools, materials and techniques that are appropriate for their grade. Lakshya focuses primarily on all the above areas and also the development of observation, exploration and technical skills.





The art of dance uses movement to communicate meaning about the human experience. It is far more than exercise or entertainment. It is a powerful medium to express one's values, thoughts, and aspirations about the lives we live and the world in which we live.

Arts research shows that students who study dance are more:

- Self-motivated, disciplined and focused in their everyday lives.
- Expressive in their communication of emotions, thoughts and feelings.
- Creative and imaginative.
- Able to critically analyze their own work and the work of others.



CLUBS

The integration of work and study is the key element in Lakshya School, Kakinada. All the students are obliged to gain practical experience in the course of their academic education. The concept of Clubs is seen as an opportunity for adaptation to life in the group, forming good life long habits and cultivating a voluntaristic spirit. Club activities supplement academics and give the students practical training which they require in day to day life. In the school various club activities are organized giving an opportunity to the students to display their talent. This may involve field work in art and sculpture, dance and drama, music and singing, drama, yoga and gymnastics, animation and robotics, photography and Photoshop, design and technology, community and humane society, climate control and eco club etc. or simply a visit for fun whilst developing social skills and making new friends.

CLUB PORTFOLIO OPTIONS

MUSIC CLUB, QUIZ CLUB, CUISINE CLUB, ECO SUSTAINABILITY CLUB, DANCE CLUB, ART & CRAFT CLUB, DRAMA CLUB, SCIENCE & TECHNOLOGY, COMMUNITY OUTREACH PROGRAMME.





At lakshya every child is provided constructive feedback and the focus is always on the positive. In such a teaching - learning environment, students will be able to practice his/her skills and talent beyond expectations, as he/she will get an opportunity to set their goals, forget his own past mistakes, and learn new things.



LABS

SCIENCE LABS

Learning by doing is the most effective way of learning. The school provides the most modern labs which are continually upgraded.

Theory is incomplete without practical. One needs to completely get involved in the various practical experiments whether it be Chemistry, Biology or Physics, to get a thorough knowledge and understanding of what had been taught in the theory class.

Labs are neatly arranged with a view to a fresh approach. When a student walks in, the Lab assistant and the teacher both assist him / her in understanding and undertaking experiments.

LIS aims to ensure that every student strengthens his / her knowledge of theory with lively practicals which will be remembered for ever.





MATHEMATICS LAB

Importance of English language in this age of globalization cannot be overstated. It is also necessary to acquire proficiency in English at an early age, so that the challenges of tomorrow can be handled with confidence. Language laboratory is an audio-visual installation used in modern teaching methods to learn the foreign languages. The language lab is a technological break for imparting skills in English. The language lab offers an exclusive result oriented and efficient to enrich the English language learning process. The language lab is developed on the methodology LSRW skills.

Mathematics Laboratory is a place where students can learn and explore mathematical concepts and verify mathematical facts and theorems through a variety of activities using different materials. These activities may be carried out by the teacher or the student to explore, to learn, to stimulate interest and develop favourable attitude towards mathematics.



INFIRMARY

The school retains an experienced and well qualified nurse who is on duty during the school. The infirmary at LIS is well equipped with all necessary first aid and primary medical care equipment. In the case of more serious ailments the nurse immediately informs the parents / guardians. The students are treated in consultation with the parents with regard to drugs, diets etc. School maintains a well-equipped four bedded dispensary under the supervision of a full time trained nurse. Routine medical checkup is carried out by the medical Officer. At the beginning of each term, each student has to undergo a routine medical examination so as to monitor a safe and healthy environment both physically and psychologically. The School infirmary will work on the effort to prevent, detect, address and resolve health problems successfully and enhance the quality of life of the school children and staff and every member of the school community. Children will be taken to specialists in case of emergencies.

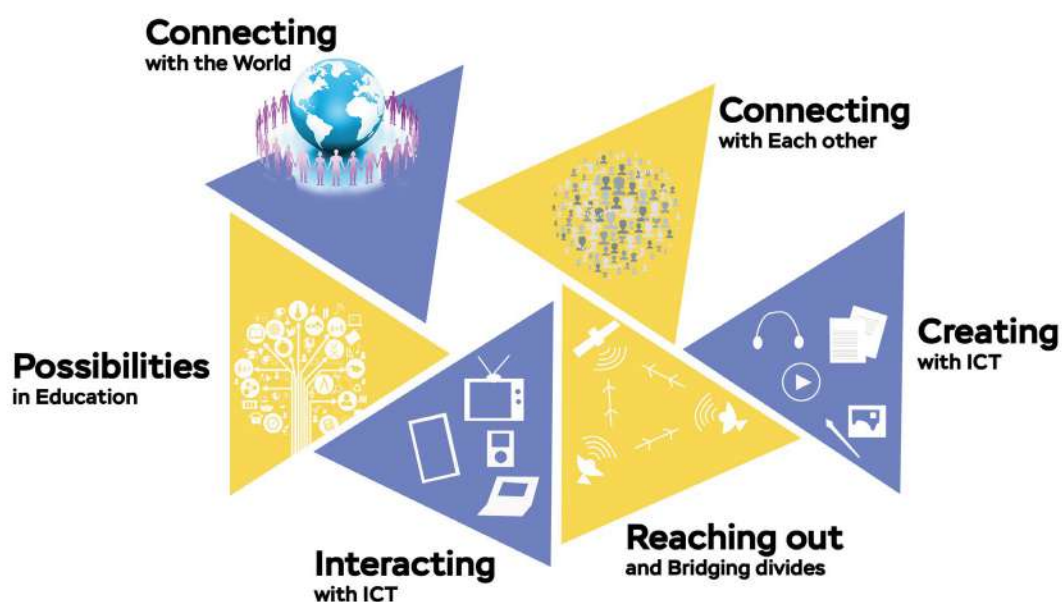


It is well recognised that MUSIC can help to develop the skills, attitudes and attributes that can support learning in other national curriculum subjects. This includes listening skills, the ability to concentrate, creativity, intuitions, aesthetic sensitivity, perseverance, the ability to work in a group, self confidence and sensitivity towards others.

Music may also be able to directly help your child to learn. Interest in the effect of music on children's learning really took off with the discovery of what is now known as the *Mozart effect*. In 1992 the late Dr Gordon Shaw realised that students performed markedly better in reasoning tests after listening to a particular Mozart sonata.

ICT

The widespread use of Information and Communication Technology has in life. ICT facilitates the acquisition of higher order thinking skills. Lakshya aims to make a student ready to face the global world. Our ICT lab is equipped with 50 PC's with latest software and high-speed Internet for students to research and learn. The student-friendly environment allows students to explore beyond their books.



MUSIC

In addition to covering curriculum expectations, students are encouraged, trained and assisted in showcasing their creativity and talents at different times throughout the course of the academic year. Students from all Grades work with different instruments both vocal and instrumental to harness their rhythm skills, in addition to exploring other areas of music..

LIS CHOIR

The choir performs a wide variety of music. Impressive song selection, energetic stage presence, great voice quality, and precise harmony are some of the features that allow the LIS choir to deliver memorable performances, time after time.

VOCAL MUSIC

In the vocal music module, students will learn to sing Independently, on pitch and in rhythm with appropriate timbre, diction and posture. Students are expected to sing expressively with appropriate dynamics, phrasing and interpretation from memory, varied songs representing genres and styles from diverse cultures. In groups, blending vocal timbres, matching dynamic levels, and responding to the cues of a conductor accurately and with good breath control throughout their singing ranges, alone, as well as in small and large ensembles



INSTRUMENTAL MUSIC

In this module, students will gain proficiency with various instruments. Playing a variety of major and minor scales. Reading familiar and unfamiliar music maintaining correct posture and hand position.

THEATRE

At Lakshya International School, we value our multicultural nature, and the theater classroom provides a safe space to learn about and explore cultural differences in a personal and practical way. Theater classes at LIS are designed to combine academic rigor with creative expression in a way that allows students to grow intellectually while deriving joy from the process. We develop the whole personality and children's imaginations through Theatre as it engages the students with the creative side of mind. The school has designed the theatre in such a way that enhances qualities like self expressing ability, emotional stability, confidence and other qualities in the student.



EXPLORATION ROOM

Exploration room inculcates in children, the sense of learning beyond classroom. It provides a pleasant environment for children to sit-back and read peacefully. This place in LIS nurtures the inquirer in them. Various activities like Dramas, Skits, Story Enacting, Roll-plays, and Mock Panchayat allows them to learn social-skills practically.



SCHOOL LIBRARY

The school facilitates spacious and well stocked open shelf library cum Resource Centre designed to encourage students in a variety of subjects and to allow research and in depth study. In addition the well - equipped school library has a variety of newspapers, magazines, journals, with computers and internet connectivity. The beautiful library provides a wide range of books and multimedia resources to support teaching and learning throughout the key stages, and foster a reading and information culture that promotes independent motivated readers and learners for life.

innovative programmes at LAKSHYA INTERNATIONAL SCHOOL

- A. Life Skills Programme
- B. Value Education Programme
- C. Student Wellness programme
- D. Community Outreach Programme
- E. DEAR programme
- F. Student Exchange Programme
- G. FIELD Trips
- H. Professional Development Sessions



CAFETARIA

"TEACHING HEALTHY HABITS
CAN REAP THE CHILDREN
FOR LIFE TIME."

The Lakshya School canteen is an important area which definitely looks at educating the students with regard to healthy eating habits, dining etiquettes, table manners etc. which will largely contribute towards leading a decent and high quality life in future. The school canteen provides a balanced diet to the students inclusive of non-vegetarian and vegetarian food in the form of Lunch and afternoon Snacks.

The Afternoon lunch has a variety of Indian, Mughal, Italian, Chinese and many more types of sumptuous and healthy dishes for the students.



TRANSPORT

For the convenience of the students and parents, the school operates a huge fleet of buses connecting nearby areas within a radius of 15 Km in the city. All the busses are checked regularly to ensure the utmost safety and security of the child. Each bus has a minimum of one attendant to take care of the children when travelling to and fro from the school. At least one teacher is available in each bus to maintain discipline. Every possible care is taken to ensure regular and punctual bus service; save in case of sudden breakdown or unavoidable circumstances. In such a situation, the same is communicated to the parents and a replacement service is made available at the earliest.

All vehicles are equipped with latest and most efficient communication technology and vehicle tracking system from GPRS system. Parents can track the buses /routes by login id/password. Safety in buses is of utmost importance and so a lady attendant will be present in all buses.

The buses will have educational videos played during their journey to and fro from school or home.

For details please contact the Front Office or The Manager, Transport on the school telephone lines.



LIFE SKILLS PROGRAMME

"The greatest discovery of my generation is that a human being can alter his life by altering his attitudes" -William James (Psychologist) -- Psychosocial competence is a person's ability to deal effectively with the demands and challenges of everyday life. It is a person's ability to maintain a state of mental well-being and to demonstrate this in adaptive and positive behavior while interacting with others, his/her culture and environment. What are Life Skills ? Life demands and challenges of life. There are many such skills, but core life skills include the ability to: The Ten core Life Skills as laid down by WHO are:- 1. Self-awareness 2. Empathy 3. Critical thinking 4. Creative thinking 5. Decision making 6. Problem Solving 7. Effective communication 8. Interpersonal relationship 9. Coping with stress 10. Coping with emotion.



VALUE EDUCATION PROGRAMME

Value education is rooted in Indian philosophy and culture and ingrained in every tradition of Indian culture. LIS plays a significant role in the promotion of value. Socialist, Secular, Democratic, Justice, Liberty Equality, Fraternity, Dignity of the individuals and integrity of the nation are the ideal conditions in the Constitution. Our values in life must draw their inspiration from these ideals. We at Lakshya do put special emphasis on the following values in the formation of character of the students: Efficiency, Good Temper, Cooperation, Integrity, Discipline, Need for Value Education, Moral awareness should be endorsed to orient the progress in science & technology towards the welfare of mankind.



STUDENT WELLNESS PROGRAMME

Student Wellness programme is committed to the educational mission of LIS which fosters a robust environment in which all students are welcome.

Student Wellness programme cultivates a healthy and safe community that inspires students to succeed as leaders, role models and good citizens.

Student Wellness engages all students in health promotion and prevention strategies that empower students to develop skills & competencies which support healthy choices and academic success as a foundation for life-long development.



COMMUNITY OUTREACH PROGRAMMES

Whether through special events, campus lectures, in-class demonstrations, on-road these programs offer students and community members opportunities to engage in fascinating and illuminating aspects of our living world.

Community Service will be an integral part as well as foundation principals of the school too. The community service initiatives in the school involves doing awareness campaigns, visit to old age homes, orphanages, deaf and mute centres, eco-sanitation drives. The students and faculty not only bond with the community but also continue to transfer the same spirit of giving.







FIELD TRIPS

Memories of school educational trips are among the most prominent of the formative years, largely because they are a welcome break in the routine for both students and teachers. While the purpose is essentially to educate, they also experience an amazing bonding to happen amongst friends. The students get to know their teachers better by staying together. It will be a classroom outside their regular place of study in school where they will learn not only to look after themselves, but to think about others and thus learn to communicate better with other individuals around them.

MUN

Model United Nations (MUN) is an extra-curricular activity in which students typically role-play delegates to the United Nations and simulate UN committees. This activity takes place at MUN conferences, which is usually organized by various high schools. It is a way to become an active, more concerned global citizen, while in this era of globalization, being globally aware is more important than ever. Furthermore Model UN builds confidence and leadership and diplomatic skills. MUN is an exercise in research, public speaking, and teamwork. We motivate students to participate in MUNS, which develops in a student all the qualities keeping them a step ahead of all the others.

STUDENTS EXCHANGE PROGRAMME

In order to provide a cross cultural exposure and a global perspective to the students, LIS is developing an extensive International and Domestic Student Exchange Network. The Exchange Programme has become increasingly popular with the students and they will soon get the chance to spend some time at a partner institute. Efforts are underway to expand the programme further and enable an even larger number of students to avail of this unique opportunity. The students on the travel exchange programme benefit through interaction with the large number of overseas students spending time at LIS.



Educational trip at LIS can reinforce what a teacher has been instructing in class about a subject and help students understand the topic better. Teachers turn trips into mobile classrooms, instructing students to collect data, then quizzing them or assigning a project based on what they learned during the outing.

PERSONALITY DEVELOPMENT PROGRAMME

Students at LIS are exposed to various types of personality development programmes as a part of the year planner. Personality development workshop will help you understand yourself better and shape your thinking and your perception of yourself and others.

TRAINING AND LEARNING METHODS

Facilitator inputs. Questionnaires, individual /paired skill practice, group activities and discussions enhanced by videos.





A VISION OF EXCELLENCE

We are often asked what makes Lakshya International School different from other schools. It is a natural inclination to begin sharing all the great things at our school. The campus and its facilities, The dynamic teaching staff, enrichment programmes for students, faculty development programmes etc. These aspects are enormously important in supporting what is fundamentally different about Lakshya International School.

However the true essence of our difference lies not in our incredible infrastructure or in the scientifically designed curriculum, but

rather in our educational vision.

A vision based on parental love, common sense, commitment, and the ability to bring it to fruition. Our vision is our difference. We persevere in educating with a proven methodology designed to nurture spirit of childhood and enquiry, while ensuring an excellence in academic achievement.

We will be ever ambitious to aspire to greater heights as we grow every year. We feel quite confident in the meritorious momentum set in action at our school. With the vision so solid and our enthusiasm so pulsating, we

radiate this energy throughout the campus. The essence of Lakshya will be felt in every corner of the school as you walk through our gate. In the lap of landscaped greenery, we are in consonance with nature ready to cultivate young minds !

Our infrastructure makes the learning place a nurturing space. Our researched blueprint for brilliance spurs the intellect and ignites the imagination ! Our corridor cradle the powerful potential within each individual to nurture each students multiple intelligences.

All in all, Lakshya is fertile ground for sowing characters that will reap dynamic destinies ! Grow Lakshya Grow !!



Lakshya International School
ADB Road, Unduru, Kakinada, East Godavari, Andhra Pradesh - 533 440
www.lakshyaschool.in | Facebook: [Facebook.com/lakshyaschool](https://www.facebook.com/lakshyaschool)

Contact : 8096196664 | 9133657007



www.lakshyaschool.in